

BRANTLY MFG. CO.

532 AND 540A FRONT LOADERS FOR 300 SERIES TRACTORS AND 400 TRACTOR



CSM600

532 Front Loader

PRODUCT FEATURES

Compatible with John Deere Attachments

The 532 Loader can be used in combination with the 33 Rotary Tiller, but not with John Deere 41 or 48 Rotary Mowers. The 540A Loader can be used with the 35A Rotary Tiller and the 60 Rotary Mower. However, the mowing height will be reduced to 4 inches.

Performance

The Brantly 532 and 540A Loaders have been time and performance tested, offering lift capacities, cycle times and ease of operation that any operator can be proud of. The loaders can be used in conjunction with the Brantly LD6 Backhoe. For applications in which the backhoe is not required, an optional ballast (sand) box is available to assure operating stability. Forty- and forty-eight-inch buckets are available. Manure-fork and pallet-fork attachments are also available.

Easy Installation

The Brantly 532 and 540A Loaders are easy to install, with simple instructions.

Controls

The control valve assembly is of the monobloc-type. Action is smooth and sure, even at low tractor engine rpm. Control valve operation is accomplished by two push-pull levers which are within easy reach of the operator, and which follow natural, logical patterns. Boom control is equipped with float position detent for leveling.

Hydraulic System

Heavy-duty cylinders, with 1-1/8-inch piston rods, are used for durability. Rubber, steel-braided hose assures even greater reliability. Cylinder diameter is reduced to provide greater operating speed capability. The hydraulic pump functions efficiently, even at low tractor rpm. Only one pump is required to operate both the backhoe and the loader.

All-Steel Construction

The Brantly 532 and 540A Loaders are structurally designed to adequately withstand the stress and strain that a loader is subjected to in any work environment. The main boom of each loader is reinforced to withstand greater stress. Grade 5 plated bolts are used in all lock-pin locations.

Maintenance

The hydraulic system is designed for trouble-free operation, and requires very little maintenance. Checking for leaks, routine greasing of eight bushings, and routine checking for wear is considered normal and adequate maintenance.

SPECIFICATIONS

(Specifications and design subject to change without notice)

Controls Monobloc-type, with float detent.
Bucket cylinder . . . 16 x 1-1/2 in. (406 x 38 mm) with
 1-in. (25 mm) piston rod.
Boom cylinder . . . 22-1/2 x 1-1/2 in. (572 x 38 mm) with
 1-in. (25 mm) piston rod.
Lift capacity . . . Breakaway lift, 750 lb. (340 kg); bucket
 capacity, 500 lb. (227 kg).
Bucket dumping 55-Degree angle.

Hydraulic system:

Type Belt-driven pump for 532; PTO-driven,
 front-mounted for 540.
 Reservoir capacity 5 qt. (4.7 L)
 [4.2 Imp. qt.]
 Hydraulic oil Type "F" automotive
 transmission fluid.
 Operating pressure 700 psi (4827 kPa).

Cycle times:

Boom up 3.5 sec.
 Boom down 2.0 sec.
 Bucket open 2.0 sec.
 Bucket closed 1.5 sec.

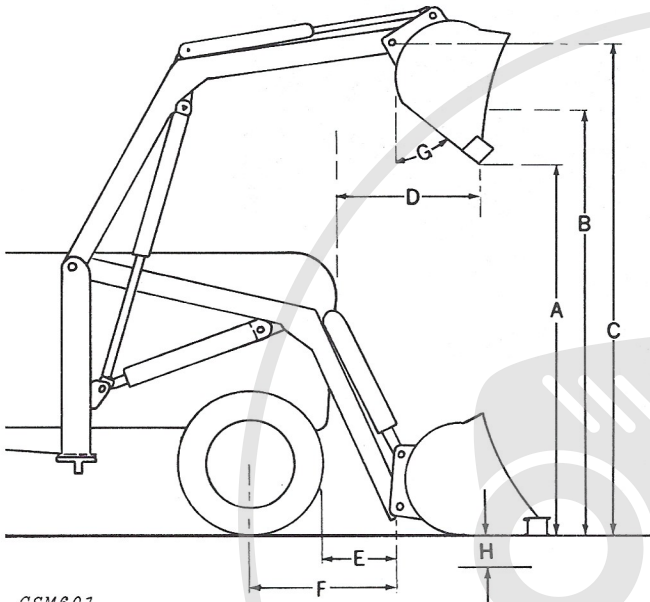
Weights:

Loader 316 lb. (143 kg)
 Pump assembly 12 lb. (5 kg)
 Ballast (sand) box 164 lb. (74 kg)

Optional equipment:

510-3 Forty-in. (1.0 m) bucket
 510-1 Forty-eight-in. (1.2 m) bucket
 512-1 Forty-in. (1.0 m) manure fork
 512-2 Forty-eight-in. (1.2 m) manure fork
 NC-32/40 Ballast (sand) box
 430-1 Pallet fork

For prices and ordering instructions, see section 65.



CSM601

Bucket clearances:

A. Fully dumped 51 in. (1.3 m)
 B. Fully raised (level) 62 in. (1.6 m)
 C. Arm clearance (bucket fully raised) 66 in.
 (1.7 m)
 D. Pivot, raised 71 in. (1.8 m)
 E. Reach, dumped 12 in. (305 mm)
 F. Axle to bucket 18 in. (457 mm)
 G. Grill to bucket 9 in. (229 mm)
 H. Digging depth 6 in. (152 mm)

BRANTLY MFG. CO.

LD6 BACKHOE FOR 300 SERIES TRACTORS AND 400 TRACTOR



CSM602

PRODUCT FEATURES

Applications

The LD6 Backhoe is ideal for use by landscapers; plumbers; builders; farmers; contractors; estate, nursery and golf course owners; etc.

Design

The LD6 Backhoe features hardened-steel, replaceable bushings around major pin-wear areas; larger stabilizer cylinders; larger rod size in boom and crowd cylinders; and rubber, steel-braid hose throughout. Plated steel pins and plated hex-head locking bolts are also featured. Reinforced swing-shaft and mainframe provide improved durability and service life. Replaceable steel teeth on the bucket provide additional digging capability.

All-Steel Construction

The rugged, all-steel, welded construction of the LD6 Backhoe features increased strength in the swing-shaft and mainframe areas.

Hydraulic System

The rugged construction of the Brantly LD6 Backhoe is carried through into the heart of the system—the hydraulic pump and cylinders. The hydraulic pump functions efficiently, even at low tractor engine rpm. There is no need to accelerate the motor. The efficiency is such that only one pump is required to operate both backhoe and loader.

Boom and dipper cylinders have a 1-1/4-inch rod for strength. A load check valve option is available for the boom cylinder. It prevents the boom from "dropping" when "metered" direction changes are made.

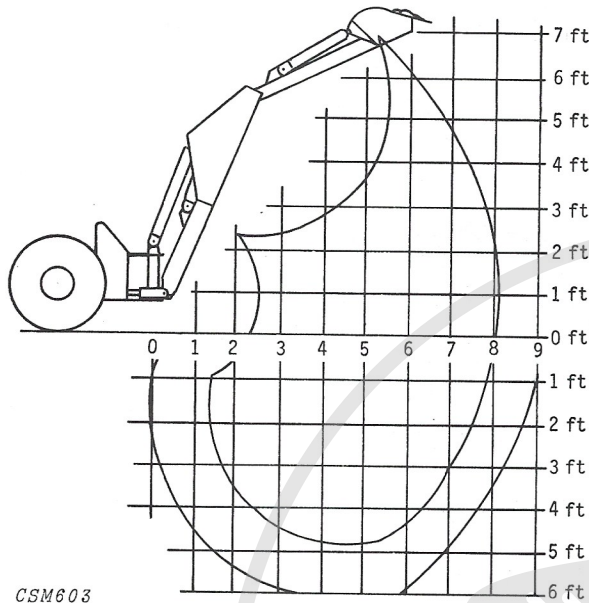
Easy Installation

The LD6 Backhoe can be installed, from shipping pad to tractor, in approximately one hour, and can be removed and re-installed by one person in 15 minutes or less. Operation of the LD6 Backhoe follows logical, natural patterns, employing a stacked control valve with a toggle-type control arrangement that assures ease of operation.

The MK32 mounting frame is required to mount the LD6 Backhoe to 300 Series Tractors. The MK40A mounting frame is required to mount the backhoe to the 400 Tractor.

SPECIFICATIONS

(Specifications and design subject to change without notice)



CSM603

- Digging depth 6 ft. (1.8 m).
- Digging radius 9 ft. (2.7 m).
- Bucket clearance 6 ft. (1.8 m)
- Swing radius 135 degrees.

Hydraulic system:

- Type Belt-driven for 532; PTO for 540.
- Operating pressure 1850 psi (12756 kPa).
- Boom cylinder . . . 22-1/2 x 2 in. (572 x 51 mm), with 1-1/4-in. (32 mm) piston rod.
- Bucket cylinder . . . 10 x 2 in. (254 x 51 mm), with 1-1/8-in. (29 mm) piston rod.
- Stabilizer cylinder . . . 10 x 2 in. (254 x 51 mm), with 1-1/8-in. (29 mm) piston rod.
- Control valve . . . Stacked, four-handle, with two bi-directional and two quadra-directional controls.

Cycle times:

- Bucket open 3.5 sec.
- Bucket closed 4.5 sec.
- Dipper open 2.5 sec.
- Dipper closed 3.0 sec.
- Boom up 6.0 sec.
- Boom down 4.5 sec.
- Boom right 3.0 sec.
- Boom left 3.0 sec.

Weights:

- 330A Backhoe 490 lb. (222 kg)
- 430A Backhoe 490 lb. (222 kg)
- P300/P400A Pump Kit 32 lb. (15 kg)
- 615 Eight-in. Bucket 21 lb. (10 kg)
- 615A Thirteen-in. Bucket 30 lb. (14 kg)
- 615B Sixteen-in. Bucket 35 lb. (16 kg)

Mounting Kits:

- MK32 300 Series Tractors
- MK40A 400 Tractor

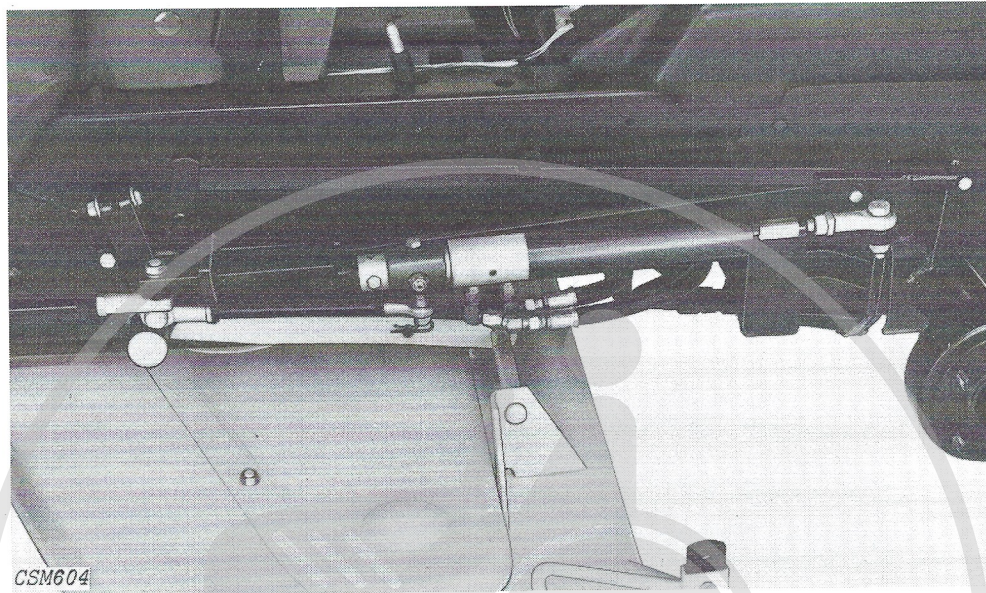
Optional equipment:

- 8-in. (203 mm) bucket with two replaceable teeth
- 13-in. (330 mm) bucket with three replaceable teeth
- 16-in. (406 mm) bucket with three replaceable teeth

For prices and ordering instructions, see section 65.

BRANTLY MFG. CO.

920-24 POWER STEERING KIT FOR 314 AND 317 TRACTORS



(Parts removed from tractor for clarity)

PRODUCT FEATURES

The 920-24 Power Steering Kit provides easy steering for reduced operator effort and increased maneuverability.

The steering kit is located under the fender deck for minimum interference.

Hydraulic power is utilized from the tractor hydrostatic transmission, for minimum cost.

The 920-24 Power Steering Kit is compatible with all John Deere attachments. This means versatility.

This power steering kit is also compatible with the Brantly front loader and other allied equipment.

Note: With the power steering kit use of tire chains requires that rear wheels be placed in the wide position.

SPECIFICATIONS

(Specifications and design subject to change without notice)

Hydraulic power . . . From tractor hydrostatic transmission charge pump.

Operating pressure . . . 500 to 550 psi (3448 to 3792 kPa)

Cylinder assembly . . . 2 x 7-inch (51 x 178 mm) cylinder with integral control valve.

For prices and ordering instructions, see Section 65.